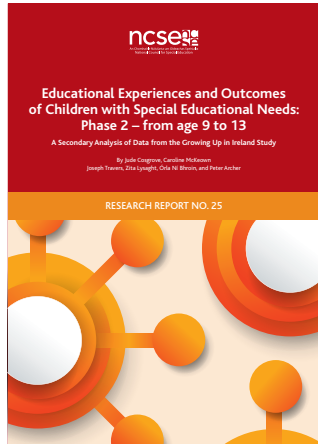
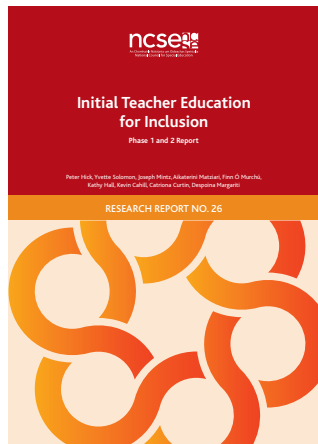


## A Selection of Research Reports published by the NCSE in 2018



*Educational Experiences and Outcomes of Children with Special Educational Needs: Phase 2 – from age 9 to 13: A Secondary Analysis of Data from the Growing Up in Ireland Study*

**Authors:** Jude Cosgrove, Caroline McKeown, Joseph Travers, Zita Lysaght, Órla Ni Bhroin and Peter Archer



*Initial Teacher Education for Inclusion: Phase 1 and 2 Report.*

**Authors:** Peter Hick, Yvette Solomon, Joseph Mirtz, Aikaterini Matziari, Finn Ó Murchú, Kathy Hall, Kevin Cahill, Catriona Curtin, Despoina Margariti

To access all our research reports visit [www.ncse.ie/research-reports](http://www.ncse.ie/research-reports)

## Research Conference 2018

**Tuesday November 20th, 2018**

09.15 – 16.15

## NCSE Research Conference 2018

Tuesday November 20th, 2018, 09.15–16.15

### Agenda

---

09.15 Registration and Tea/Coffee

#### Session 1

### Transitions from School and Lifelong Learning for Adults with Disabilities

---

Chair: **Professor Sheelagh Drudy**, Chairperson NCSE Research Committee

10.15 Welcome and Introduction: **Sheelagh Drudy**

10.20 **Sheila Riddell**, Edinburgh University

*Lifelong Learning and Transitions for Adults with Disabilities.*

11.00 **Q & A**

11.10 **Tea/Coffee**

11.40 **Rosalind Henry**, RSM Ireland and **Michael Shevlin**, Trinity College Dublin

*NCSE Commissioned Research: Reviewing Educational Provision for Adults with Disabilities in Day Services, 2018-2019.*

12.10 **Q & A**

12.15 Panel Discussion on Transitions from School and Lifelong Learning for Adults with Disabilities

- Hannah Byrne, Trainee who uses the services of WALK
- Catherine Kelly, Director of Services, WALK
- Fiona Maloney, Director of Further Education and Training Support Services, Education and Training Boards Ireland
- Gavin Rose, Multi Service User
- Gerry Tully, National Disability Specialist, Disability Services, Health Service Executive

13.00 **Q & A**

13.15 **Lunch**

---

#### Session 2

### Delivering Therapy Supports in Education

---

Chair: **Dr Finian O'Shea**, NCSE Research Committee Member

14.30 Introduction: **Eamon Stack**, NCSE Chairperson

14.40 Conference Address: **Dalton Tattan**, Assistant Secretary, Department of Education and Skills

14.50 **Eve Hutton**, Canterbury Christ Church University

*Implementing Capacity-Building Therapy Interventions in Schools*

15.25 **Elsbeth McCartney**, University of Stirling

*Teacher-Therapist Collaborations and Outcomes for Students with Speech and Language, and Communication Needs*

16.00 **Q & A**

16.10 **Thank you and conference close**